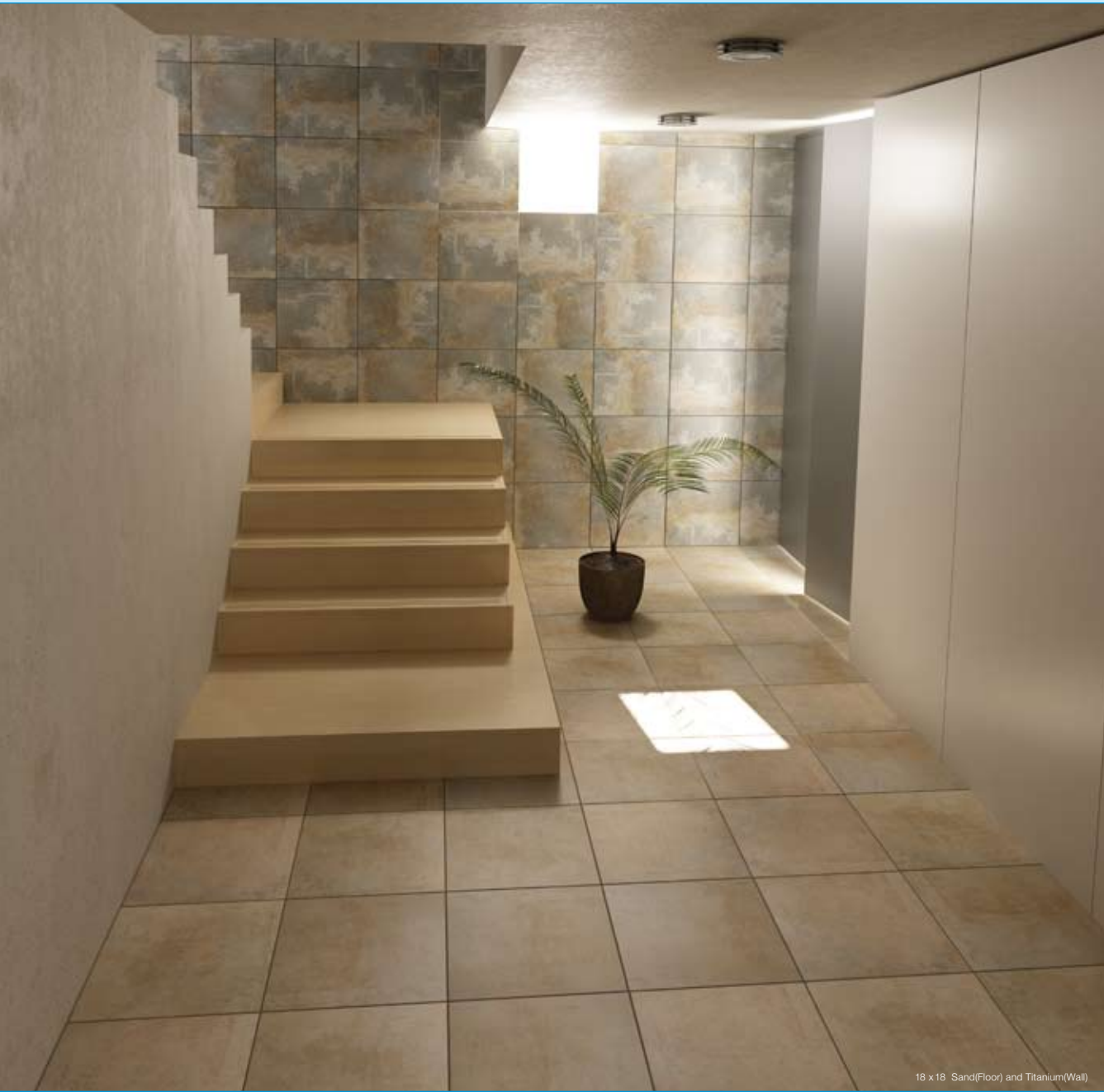


Incepa

argos

argos

Porcelain



18 x 18 Sand(Floor) and Titanium(Wall)



TECHNICAL STANDARDS

Description	ASTM	ANSI	Result
Water Absorption	C-373	≤ 3%	≤ 0.5%
Break Strength (lbs.)	C-648	≥ 250 lbs	Min. 350 lbs
Scratch Hardness	MOH's Scale	N/A	5
Chemical Resistance	C-650	Unaffected	UA/ULB
Frost Resistance	C-1026	Resistant	Resistant
Group	C-1027	N/A	4
Minimum Bond Strength (PSI)	C-482	≥ 50 lbs	165
Shade and Texture Rating	V	N/A	V4
Coefficient of Friction/ Dry	C-1028	Varies	≥ 0.81
Coefficient of Friction/ Wet	C-1028	Varies	≥ 0.68

PRODUCT CHARACTERISTICS

- Excellent coefficient of friction in wet and dry conditions
- Nice range of shades and patterns for beautiful designs
- Large sizes, mosaics and borders for different pattern applications

APPLICATIONS

- Ideal for commercial/residential applications
- For indoor and outdoor applications

Roca

Roca Tile Group

LAUFEN

UNITED STATES
CERAMIC TILE

Incepa

11190 NW 25th Street, Suite 100, Miami, FL 33172 / (800) 321-0684 / www.rocatilegroup.com

argos

PORCELAIN



18 x 18 and 13 x 24 Antracita

ANTRACITA



18 x 18 (17 1/2 x 17 1/2) I67000002
 13 x 13 (13 x 13) I67040000
 13 x 24 (13 x 23 5/8) I67020002



MOSAIC
 13 x 24 (12 1/2 x 23 1/4)
 I74370008

TITANIUM



18 x 18 (17 1/2 x 17 1/2) I67000004
 13 x 13 (13 x 13) I67040004
 13 x 24 (13 x 23 5/8) I67020004



MOSAIC
 13 x 24 (12 1/2 x 23 1/4)
 I74370004

BEIGE

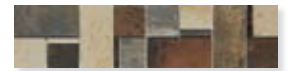


18 x 18 (17 1/2 x 17 1/2) I67000008
 13 x 13 (13 x 13) I67040002
 13 x 24 (13 x 23 5/8) I67040008

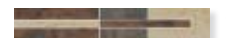


MOSAIC
 13 x 24 (12 1/2 x 23 1/4)
 I74370006

MULTICOLOR



INSERT
 4 1/4 x 17 (4 1/4 x 17 1/4)
 I74010024*



INSERT
 2 x 13 (2 x 13)
 I74310000*



MOSAIC
 13 x 24 (12 1/2 x 23 1/4)
 I74370010*

• Four tiles shown above in each color indicates shade and texture variations. Tiles come in a random assortment. • Sizes in () indicate nominal size. * Coordinates with all three Argos colors.